



# Keimm Design Technologies

**Engineering Manufacturing & Exports.**

Phone: +91 9146008441

WhatsApp : +91 9146008442

Email: info@keimmdts.com

Web: www.keimmdts.com

## **❖ ABOUT US**

It is our pleasure to introduce our concern as “**KEIMM**” is a one of the leading Designer ,Manufacturer and Exporter of **Various Types Fabrication Products in MS, SS,ALU, Various Types of Conveyors ( Belt Conveyor, Screw Conveyor, etc) & Sheet Metal Products** to Domestic as well as International Market. Our offered ranges of products are highly appreciated by the clients all around the world for its unique property like unique and rigid design, Workmen ship and robust construction at effective cost which required less maintenance.

“KEIMM” is the leading Universal Design Engineering & Technologies service provider as well as the promising Manufacturer and exporter of Engineering Products from India has been set up in the year 2016 primarily as a Merchant Export company in Pune (Maharashtra, India) on the west coast of India. We are renowned Manufacturer and traders in the domestic markets and spreading our wings now to the international opportunities. Our Products are complemented by Professional services, Customer Support, in Numerous industries: food, pharmaceutical, metal, mining, manufacturing, facilities, water, chemical, paint industries, etc. Incepted at Pune (Maharashtra, India), we “KEIMM DESIGN TECHNOLOGIES” is instrumental in offering quality approved Designing Service, Process Equipment Design & Manufacturing Services, etc., to our customer. Our team of experts is rendering these services to our prestigious clients at reasonable cost.

## **MACHINES & FABRICATIONS**

It is our pleasure to introduce our concern as “**KEIMM**” is a one of the leading Designer, Manufacturer and Exporter of **Various Types of Fabrication Products** to Domestic as well as International Market. Our offered ranges of products are highly appreciated by the clients all around the world for its unique property like unique and rigid design, Workmen Ship and robust construction at effective cost which required less maintenance.

- ❖ ALL TYPES OF HEAVY AND LIGHT FABRICATIONS.**
- ❖ FABRICATION WORKS IN ALL MATERIAL.**
- ❖ SHEET METAL WORKS IN GI, MS, SS, ALU.**
- ❖ PROCESS EQUIPMENTS.**
- ❖ PROCESS & STORAGE TANKS.**
- ❖ GI TRUNKS FOR DOCUMENTS STORAGE SYSTEM.**
- ❖ BELT / SCREW CONVEYORS WITH DESIGN.**
- ❖ GAS/BIOGAS FLARING SYSTEM.**

KEIMM DESIGN TECHNOLOGIES.

Office - B9 / 101 R Euphoria Co-Op Housing Society Kondhwa Budruk, Pune 411048.

Works:- GAT NO 1323/1, More Vasti ,Chikhali, Pune- 411062.

www.keimmdts.com

# ❖ OUR PRODUCT GALLERY FOR MACHINES & FABRICATIONS.

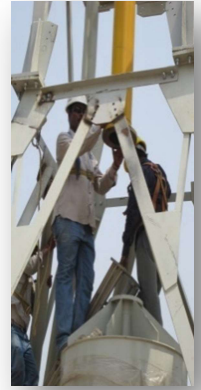


**KEIMM DESIGN TECHNOLOGIES.**

Office - B9 / 101 R Euphoria Co-Op Housing Society Kondhwa Budruk, Pune 411048.

Works:- GAT NO 1323/1, More Vasti ,Chikhali, Pune- 411062.

[www.keimmdts.com](http://www.keimmdts.com)



**KEIMM DESIGN TECHNOLOGIES.**

Office - B9 / 101 R Euphoria Co-Op Housing Society Kondhwa Budruk, Pune 411048.  
Works:- GAT NO 1323/1, More Vasti ,Chikhali, Pune- 411062. [www.keimmdts.com](http://www.keimmdts.com)

## ❖ **COMPANY PROFILE.**

It is our pleasure to introduce our concern as “**KEIMM**” is a one of the leading Designer ,Manufacturer and Exporter of **Various Types Fabrication Products in MS, SS,ALU, Various Types of Conveyors & Sheet Metal Products** to Domestic as well as International Market. Our offered ranges of products are highly appreciated by the clients all around the world for its unique property like unique and rigid design, Workmen ship and robust construction at effective cost which required less maintenance.

**Nature of Business:** Engineering Products Manufacturing & Export.

We are prominent Manufacturer and traders for supply of the following pre-dominantly with a minimum order and supply of 20' FCL/LCL.

### **Main Products**

\* **Domestic & International Manufacturing & Exports-** Various Types of Fabrication Products. Sheet Metal Products, Different types of Conveyors.

\* **Fabrication & Conveyors-** a) Gear Housing Fab. ; b) Process & Storage Tanks ; c) Structural Fab.. d) Sheet Metal Processing; e) Sheet Metal Products in SS, MS, GI,ALu; f) Gas/Biogas Flare Stack; g) Small SPM....etc

\* **Conveyors & Fabrications** - a) Belt Conveyors ; b) Roller Conveyors ; c) Wheel Conveyors ;d) Screw Conveyors; e) Gravity Conveyors...etc

**Vision:** We envision to be recognized globally for Import and Export product services for a wide range of markets for our quality and the value we deliver to our delightful Customers, clients, stakeholders.

**Mission:** Provide hassle-free and cost-effective import and export of products to clients worldwide with superior quality and create value. Expansion of our business into new industries and related businesses, offering new avenues for cumulative growth and advancement for our firm, clients, stakeholders.

**Company Partners :** 1) Mr. S A R Kazi.      2) Mr. S J Mulla.

**Registered Address:** Gat No.1323, Chikhali, Pune.411062. Maharashtra, India.

**Markets Served:** India, UAE.

**Minimum Order Quantity:** No Limit, As per buyers convenient.

**Product Samples:** Free samples available on request. Freight Charges to be borne by Buyer.

**Supply Potential and Capability:** As per order and size along with customization in packaging as per buyer brand and material.

**Nearest Ports:** JNPT-Mumbai.

**Payment Terms:** 100% Advance, 100% T/T, L/C (Letter of Credit), Advance 50% and rest 50% against Bill of Lading (D/P)

**Accepted Delivery Terms:** FOB / CIF

**Accepted Payment Currency:** INR ₹ ; USD \$; EURO € ; GBP £.

**Legal Status of Firm:** Partnership Firm

**Statutory Credentials:**

**Membership Code** : AARFK4080F  
( Registered Exporter under Govt. of India Importer Exporter Code, Issued by DGFT )

**GSTIN** : 27AARFK4080F1Z3

**MSME** : MH26A0121837

**OUR (UAE)  REPRESENTATIVE CONTACT: - +971 54 357 8185**

**“KEIMM GROUP”**

➤ **KEIMM DESIGN TECHNOLOGIES.**

Office – Kondhwa Bdk. Pune- 411048 ( Contact :+91- 9146008441/42.)  
WORKS - GAT NO 1323/1, Matruchaya Niwas, Sane Colony, More Vasti,Chikhali,  
Pune,Maharashtra, 411062.  
GSTIN- 27AARFK4080F1Z3

➤ **KEIMM HYDRO-PNEUMATICS.**

Office – Parijat Banglow,Gat No.- 1323/1, Nayar Colony,Sane Chowk, Chikhali,  
Pune 411062.( Contact :+91- 9146008443/45.)  
WORKS - GAT NO 1323/1, Matruchaya Niwas, Sane Colony, More Vasti,Chikhali,  
Pune,Maharashtra, 412114.  
GSTIN- 27AAUFG7088A1ZW

---

**KEIMM DESIGN TECHNOLOGIES.**

**Office - B9 / 101 R Euphoria Co-Op Housing Society Kondhwa Budruk, Pune 411048.**  
**Works:- GAT NO 1323/1, More Vasti ,Chikhali, Pune- 411062. [www.keimmdts.com](http://www.keimmdts.com)**